

ANSHU PAL

School of Planning and Architecture, Delhi

Selected Works | 2013 - 2021

TANA : BANA

AD10 | Architectural Thesis | Page **04**
Guides Suneet Mohindru & Rajeev Agarwal

THE FOLLY

AD3 | Spatial Exploration | Page **10**
Guides Moulshree Joshi & Saptarishi Sanyal

PATHIKA : CHAKRA

AD9 | Urban Interventions | Group Project | Page **14**
Guides Satish Khanna & Aruna Ramani Grover

CONVENTION HOTEL

AD7 | Services & Structures | Page **18**
Instructor Mandeep Singh

WORK EXPERIENCE

Jobs | Internships | Volunteer Work | Page **22**
Responsibilities and Execution

EXPERIMENTS : STUDIES

Illustrations | Architectural & Material Explorations | Page **28**
Freelance & Self Initiated Projects

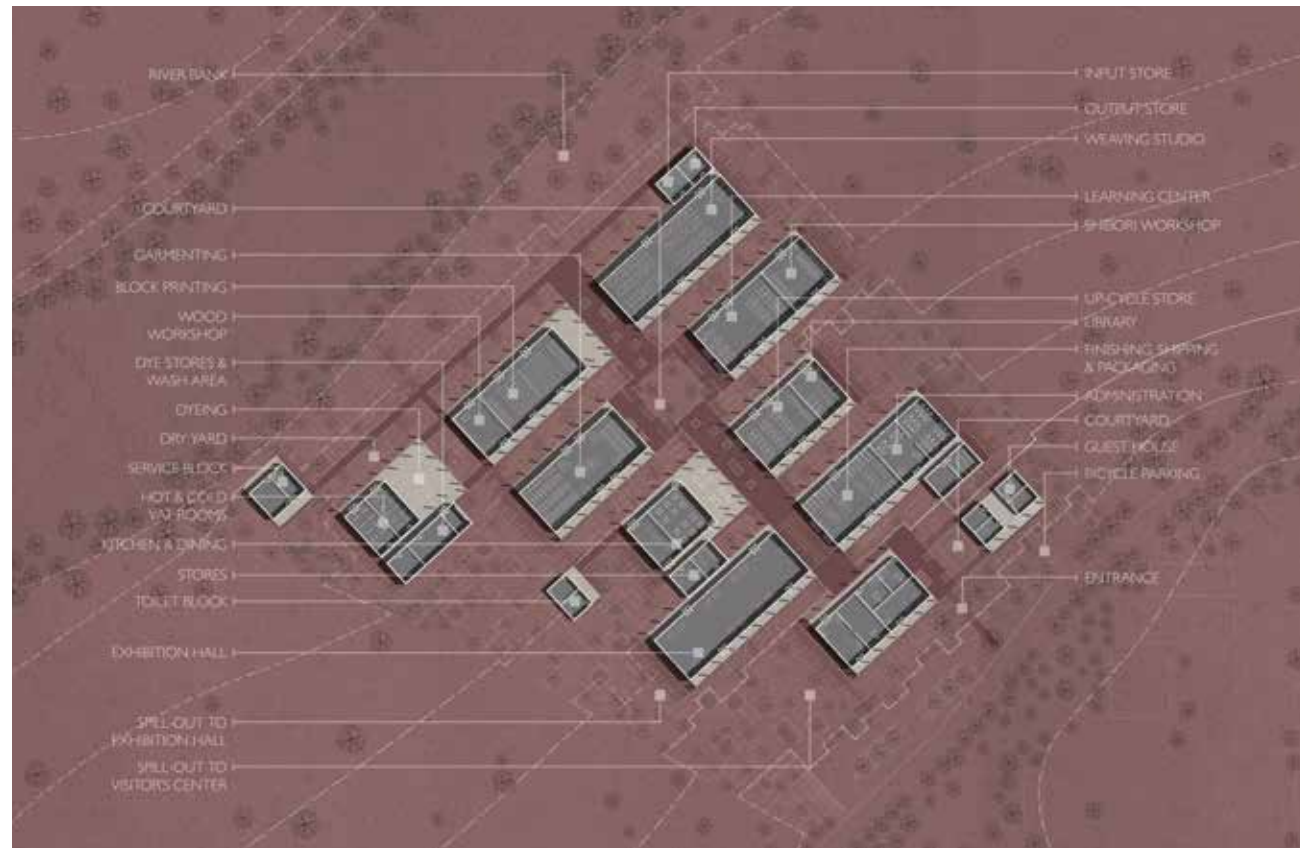


TANA BANA

Textile Studio & Training Centre, Maheshwar

*Architectural Thesis | SPA Delhi
Guides Suneet Mohindru & Rajeev Agarwal*

The search is for an architectural expression that originates from the amalgamation of technology with culture and embodies modern and traditional. This thesis proposed creating a minimal construct weaved among the greens by blurring the boundaries between the public and private spaces. The architectural expression aims to exhibit the cohesion of traditional with contemporary through form, materials and program.



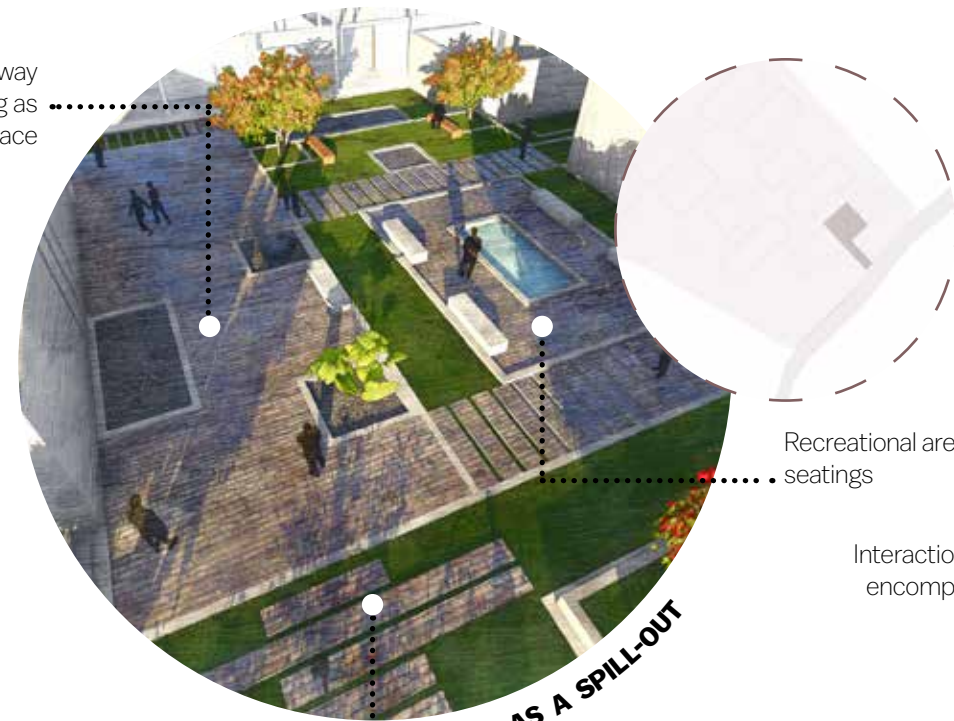
The area program does not intend to reform but strengthen the existing handloom community of Maheshwar. The design is efficient as it encourages collaborative design innovation by providing global exposure to the craft. It also provides the platform for artisans to understand the present-day market and explore contemporary technologies to their benefit.

SITE AREA: 27800 sq.m
BUA: 13100 sq.m
GC: 28%

From top Site Plan, Basic Area Program & Unit Structure



Entrance pathway doubling as interaction space



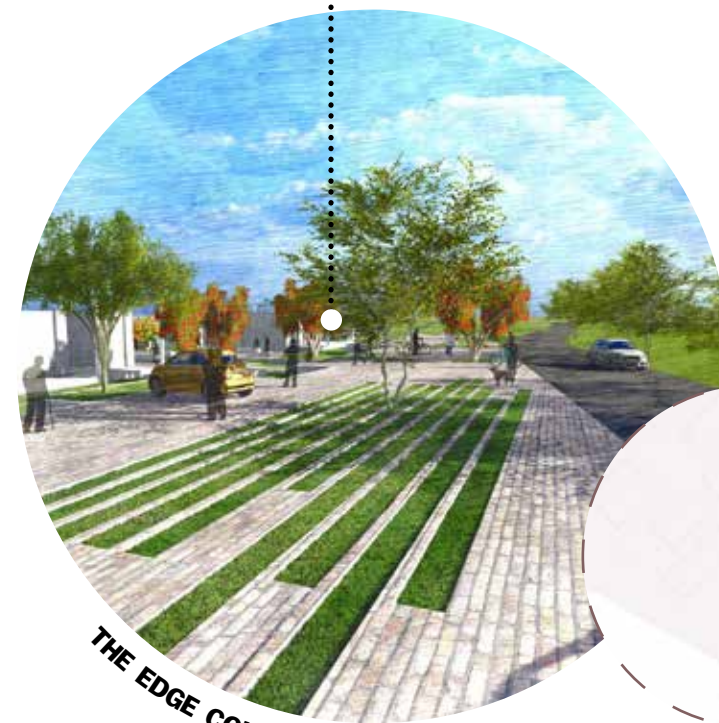
Recreational area with seatings

Interaction spaces encompassed by streets

Path from the entrance

STREET AS A SPILL-OUT

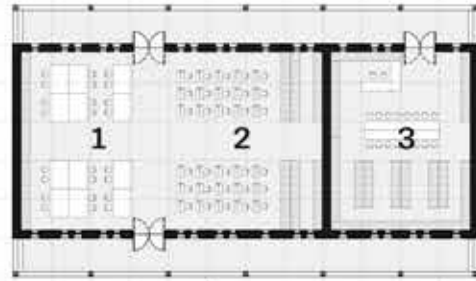
Parking designed for a blurred edge treatment



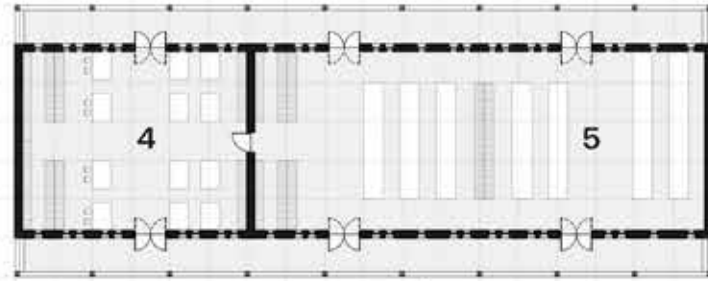
THE EDGE CONDITIONS

STREET AS A RECREATIONAL SPACE

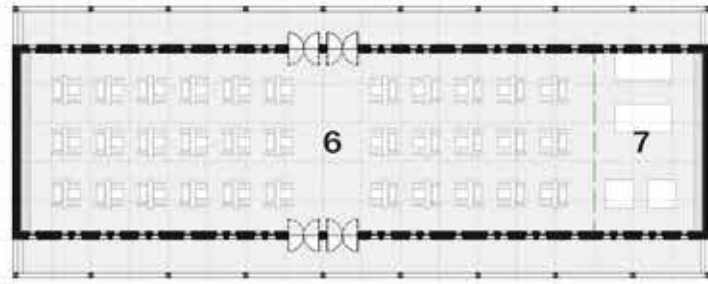
The spinal pedestrian street acts as a recreational space and weaves through to unite the modular units.



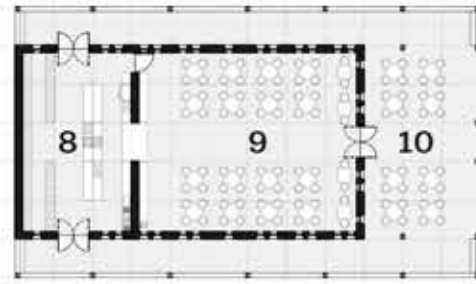
Training Centre | Library



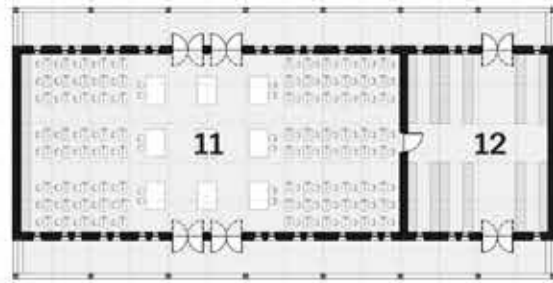
Tooling & Woodwork Workshop | Block Printing Studio



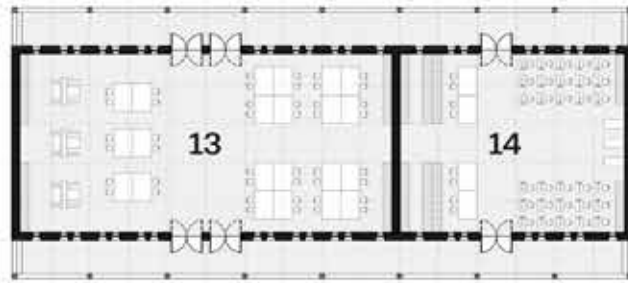
Weaving Studio



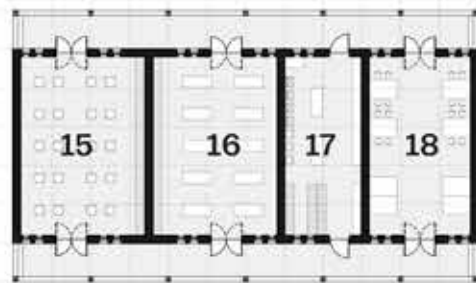
Kitchen & Dining



Garmenting Studio

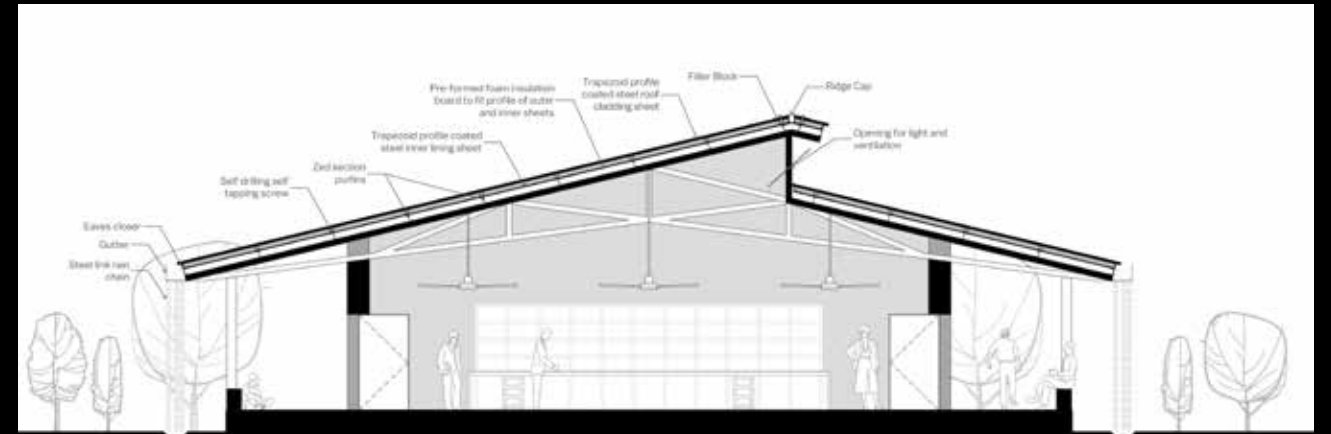


Upcycle Studio | Shibori Workshop



Dyeing, Wash & Dry

- | | |
|--|--|
| 1 Workshop & Learning Area | 11 Areas for Sampling, Layering, Ironing Tables, Hand & Machine Stitching, Buttoning & Embroidery |
| 2 Training Area | 12 Input & Output Store |
| 3 Library | 13 Dedicated Studio for Upcycling Waste Fabrics from all Workshops |
| 4 Tooling, Maintenance & Woodwork Workshop for Block-Printing | 14 Shibori - Japanese Manual Resist-Dyeing Technique |
| 5 Block Printing Studio | 15 Hot Dyeing Vats |
| 6 Weaving Studio w looms | 16 Cold Dyeing Vats |
| 7 Bobbin & Drum Feeder w Input & Output Storage at Mezzanine | 17 Wash Area & Dye Store |
| 8 Kitchen w Storage, Prep & Cooking | 18 Drying & Quality Check |
| 9 Indoor Dining Seating Area | |
| 10 Semi-covered Seating | |



From top Transverse Section of The Block Printing Studio, Elevation Drawing exhibiting different materials



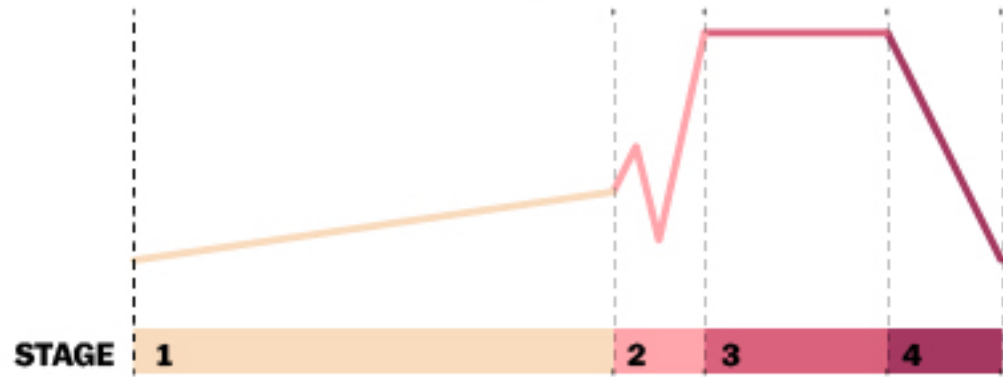
THE FOLLY

Middle of Nowhere

*Spatial Exploration | SPA Delhi
Guides Moulshri Joshi and Saptarshi Sanyal*

On an imaginary plot of 35m x 35m, the challenge was to design a folly based on a single emotion. The author, through materials, sounds and textures, explores the emotion Euphoria by triggering sensory experiences.

EUPHORIA Intense state of transcendent happiness combined with overwhelming sense of contentment

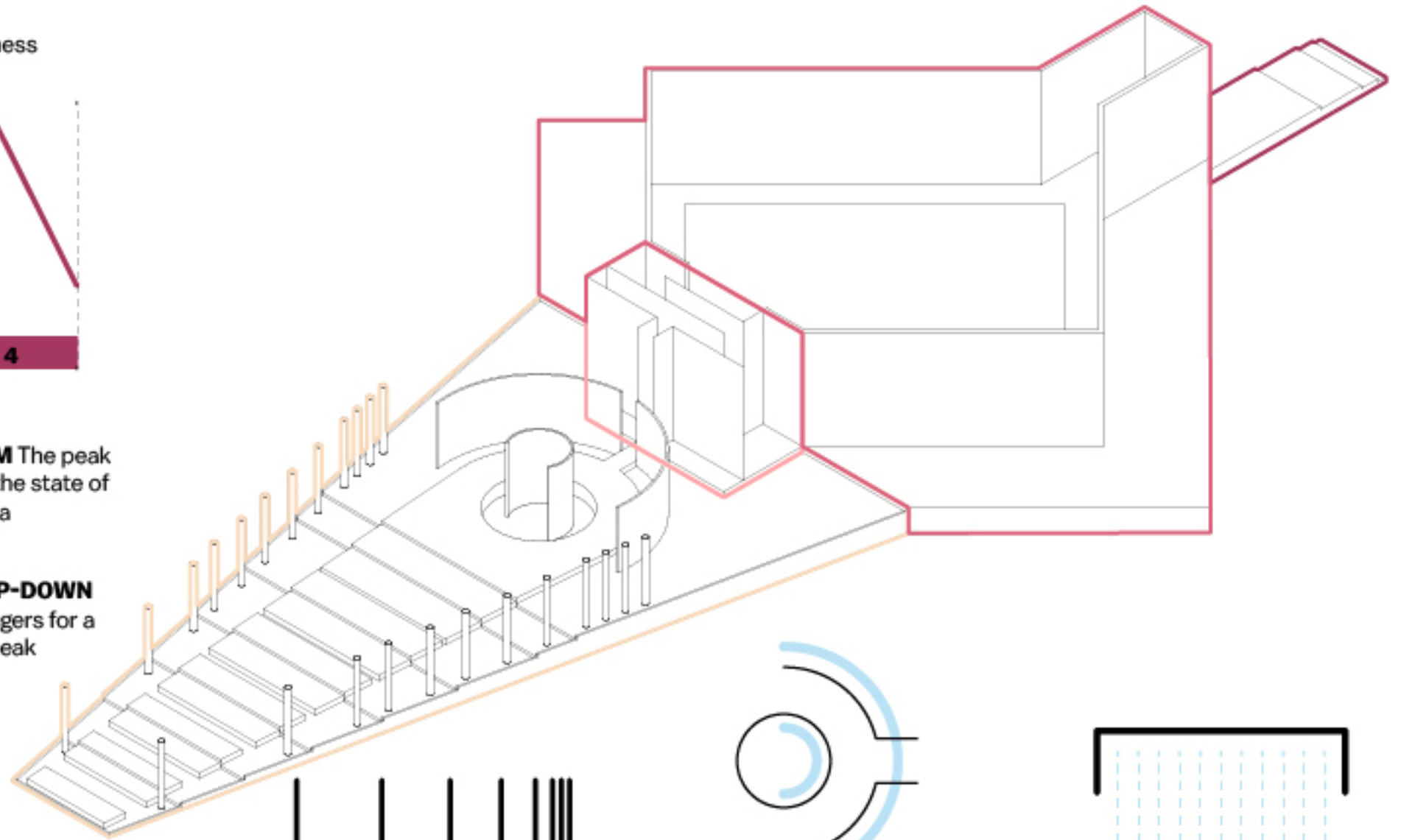


1 THE WATER WALK Starts as a feeling of being elated that gradually amplifies

3 THE RAIN ROOM The peak of the emotion, the state of ultimate Euphoria

2 VINEYARD MAZE Short haphazard state just before reaching Euphoria

4 VINEYARD STEP-DOWN The state that lingers for a short while the peak



WATER, in different forms, along with details that involves all the senses of the user, expresses the essence of the emotion

Journey, that starts bare foot, gets easier as stepping stones in water come closer

Free standing pillars moving closer in distance, gradually disconnects the user from the world and more into the feeling

Water curtain introduces curiosity for the user by limiting the view; water also changes its form from floor element to a wall element

The summit of the emotion is experienced in the rain room which immerses the user completely in the emotion (water)

ASCENDING STEPS

PILLARS

FOUNTAIN

MAZE

RAIN ROOM

GRAPEVINE

DESCENT

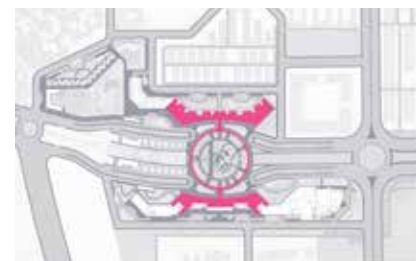
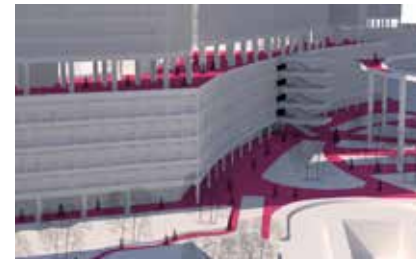
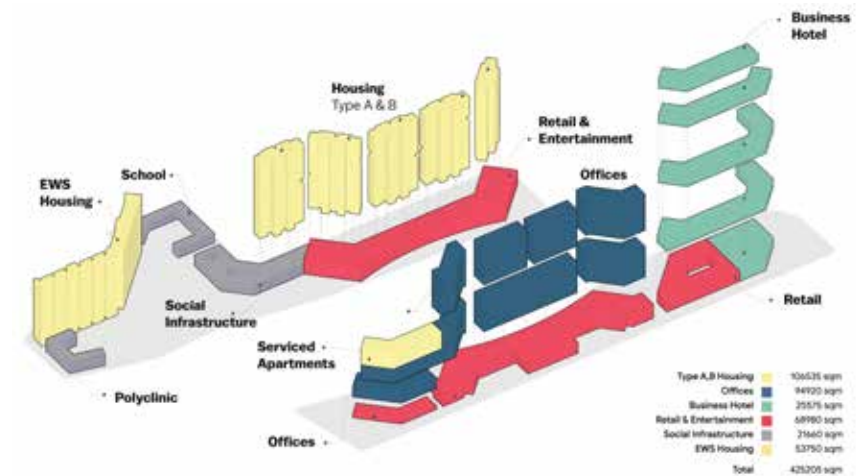
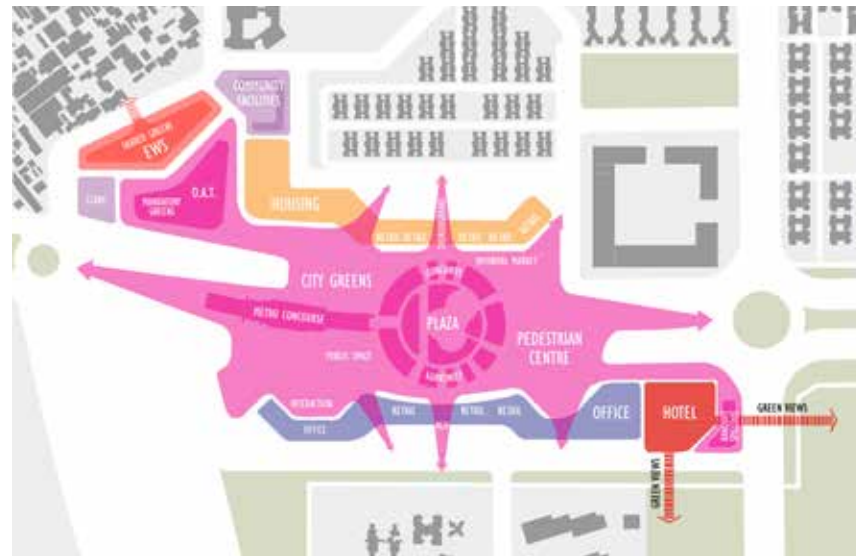


PATHIKA CHAKRA

Transit-oriented Development | Metro Precinct Dwarka Sector - 14

*Urban Design | In collaboration with Akshita Arya, G. Anusha & Vaibhav Gupta
Guides Satish Khanna and Aruna Ramani Grover*

Since pedestrians are the dynamic connectors of the urban space, extensive pedestrian networks with adequate greens are at the core of this design. The existing road between the two divided sites was re-routed to a lower level to create city greens on the ground level instead. Moreover, a circular pedestrian walkway connecting the two podium levels reinforces the design and is known as the Pathika Chakra.



The main road & metro line divides the two sites of 6.72 ha & 4.78 ha longitudinally. Hence, distributive horizontal zoning was the design approach for efficiency. The two sides were distributed with public activities (commercial & hotel) with city greens as the centre to bind the design together. The offices & housing were then grouped on each side with social infrastructure and greens as relief spaces.

SITE AREA: 11.5 hectares
MANDATORY GREENS: 2.5 hectares
PERMISSIBLE FAR: 400
FAR ACHIEVED: 369
BUA: 42.5 hectares
GC: 27%

Clockwise from top Zoning, Urban lung spaces between the masses, Pedestrian networks on ground and podium level, Massing **Facing Page:** Site Plan, Commercial Centre as designed by the author



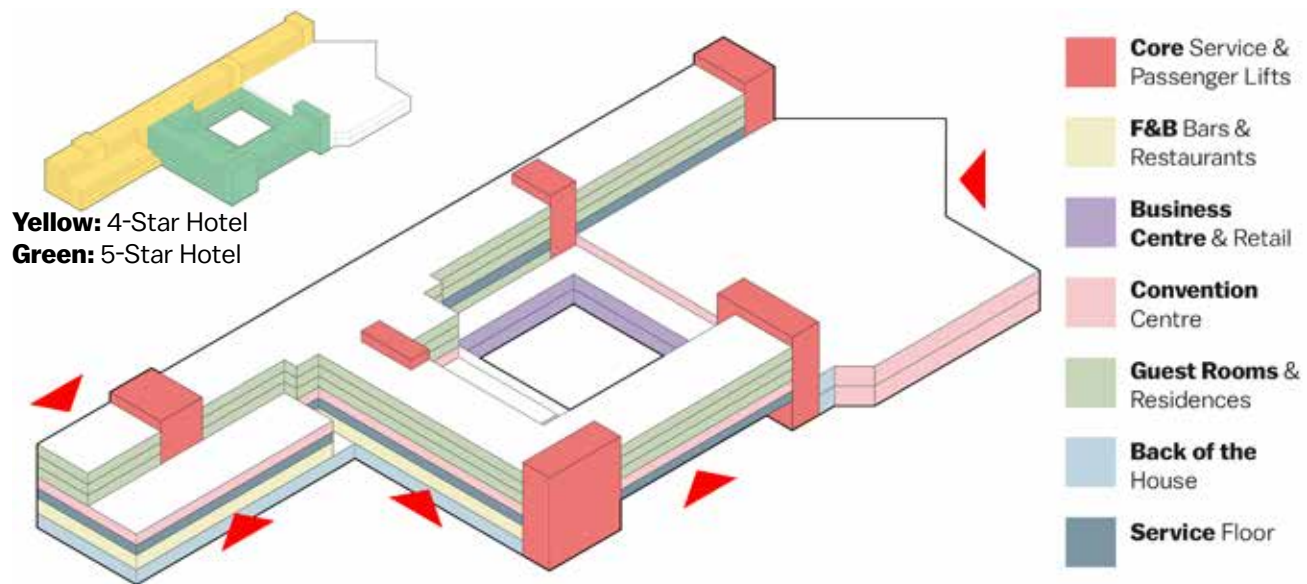
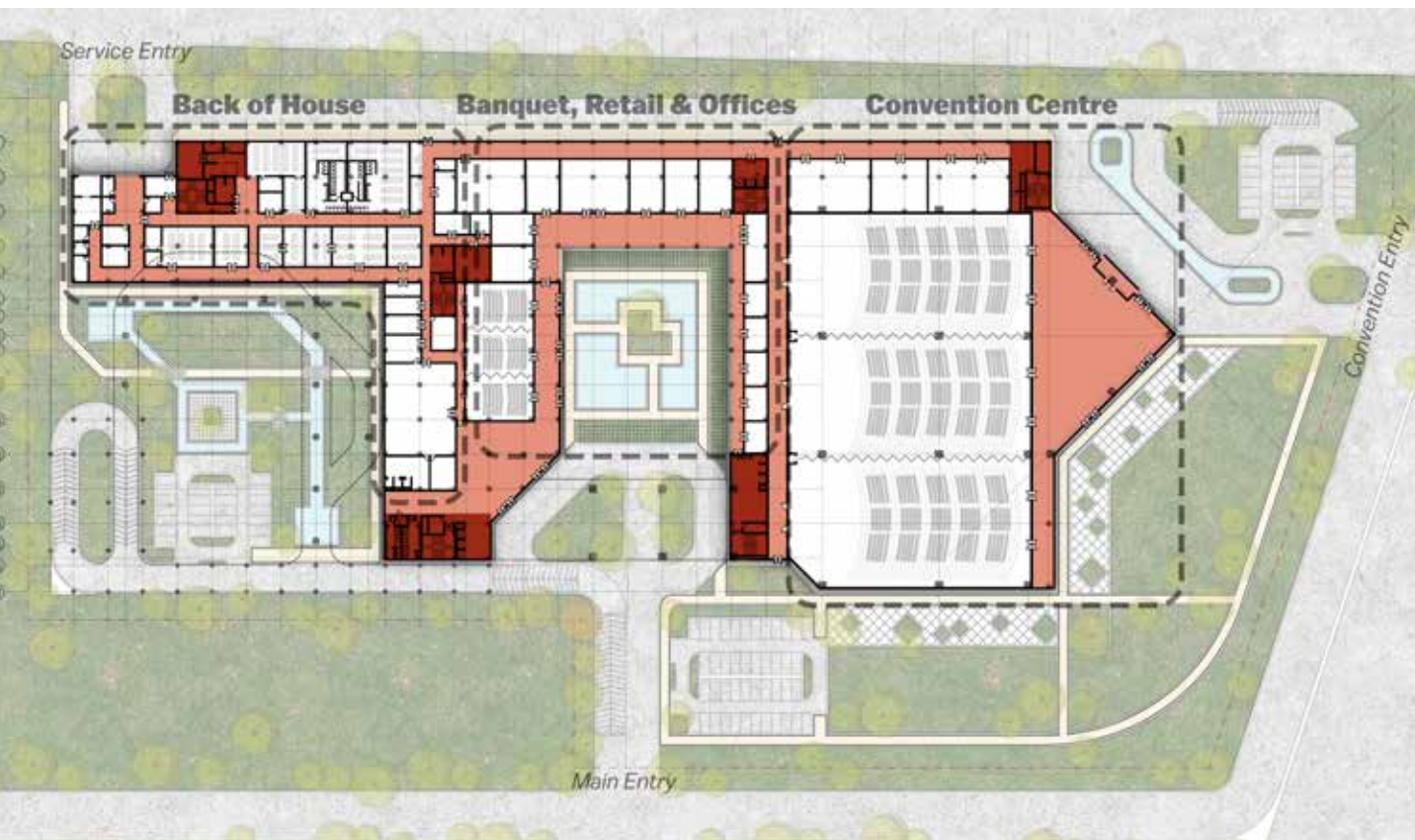


CONVENTION HOTEL

High End and Value Based Hotel | Gurgaon Sector 73

*Services and Structure (Choice Based Studio) | SPA Delhi
Guides Taranjit Singh and Mandeep Singh*

The project brief was to design a 4-star (520 rooms) and 5-star hotel (150 rooms) primarily with a 9000-seat convention centre. Hence the primary goal was to configure efficient circulation, both internal and external, which dictated the form later. The goal was to create a self-sufficient building that utilizes terraces and greens for solar panels and terrace farming.



Yellow: 4-Star Hotel
Green: 5-Star Hotel

SITE AREA: 48943 sq.m
BUA: 84428 sq.m
GC: 36%

Clockwise from top Site Plan, Zoning and Massing **Facing Page:** Unit Plans detailed for 5-star Hotel

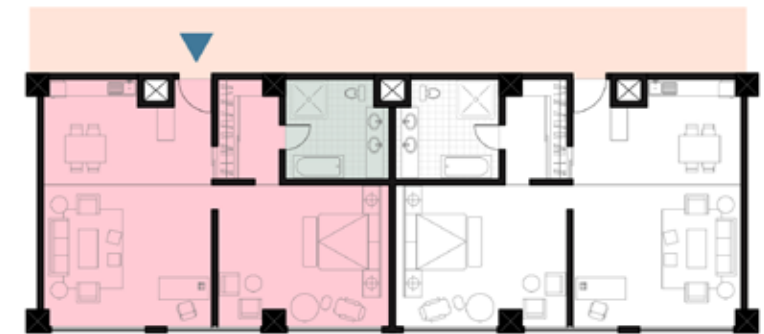
PRESIDENTIAL Suite

Area (m²): **197**
No. of Keys: **1**
No. of Bays: **5**



DELUXE Suite

Area (m²): **118**
No. of Keys: **3**
No. of Bays: **9**



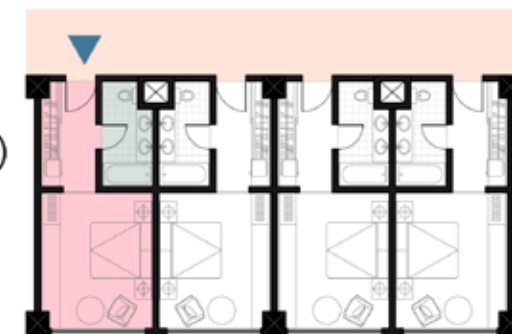
EXECUTIVE Suite

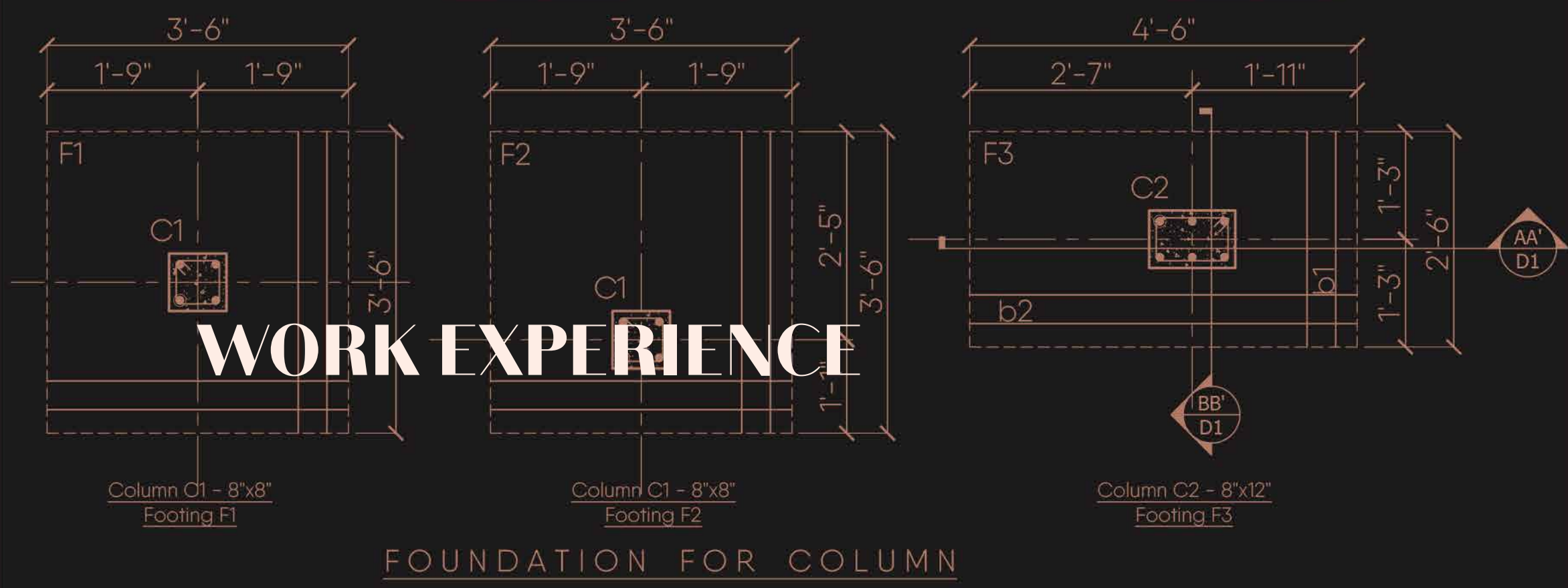
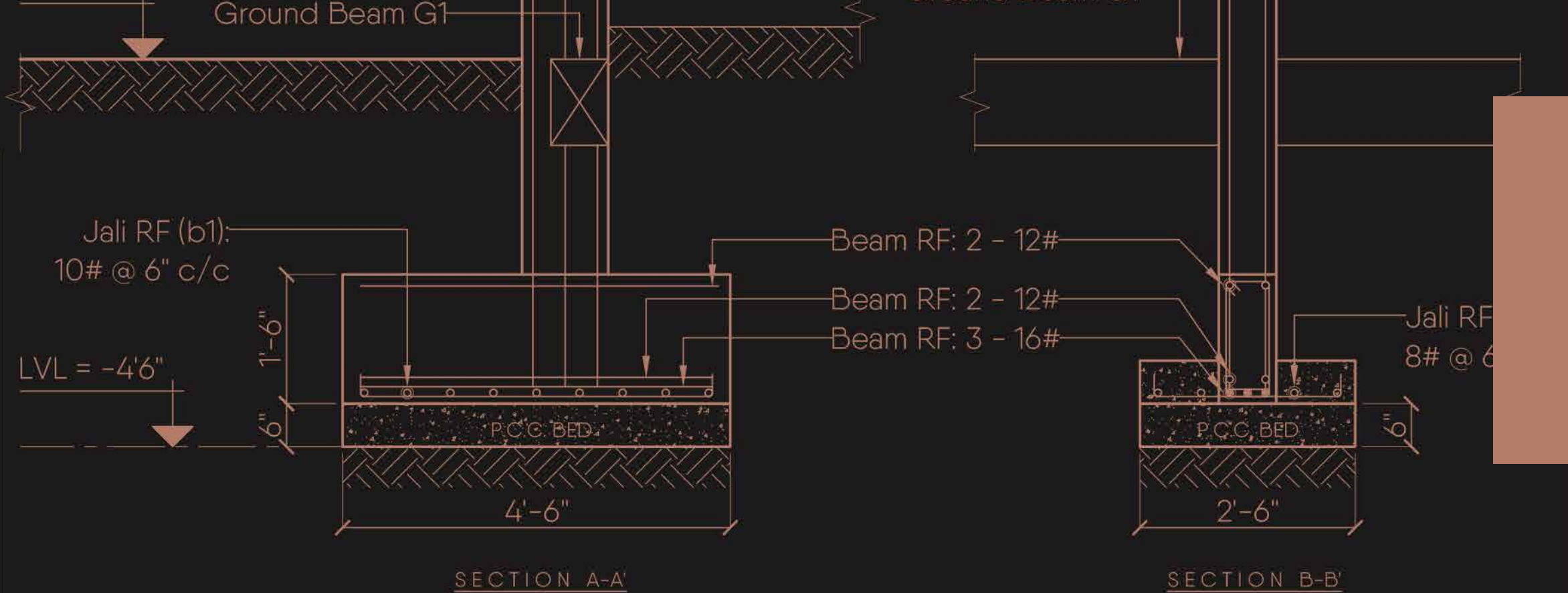
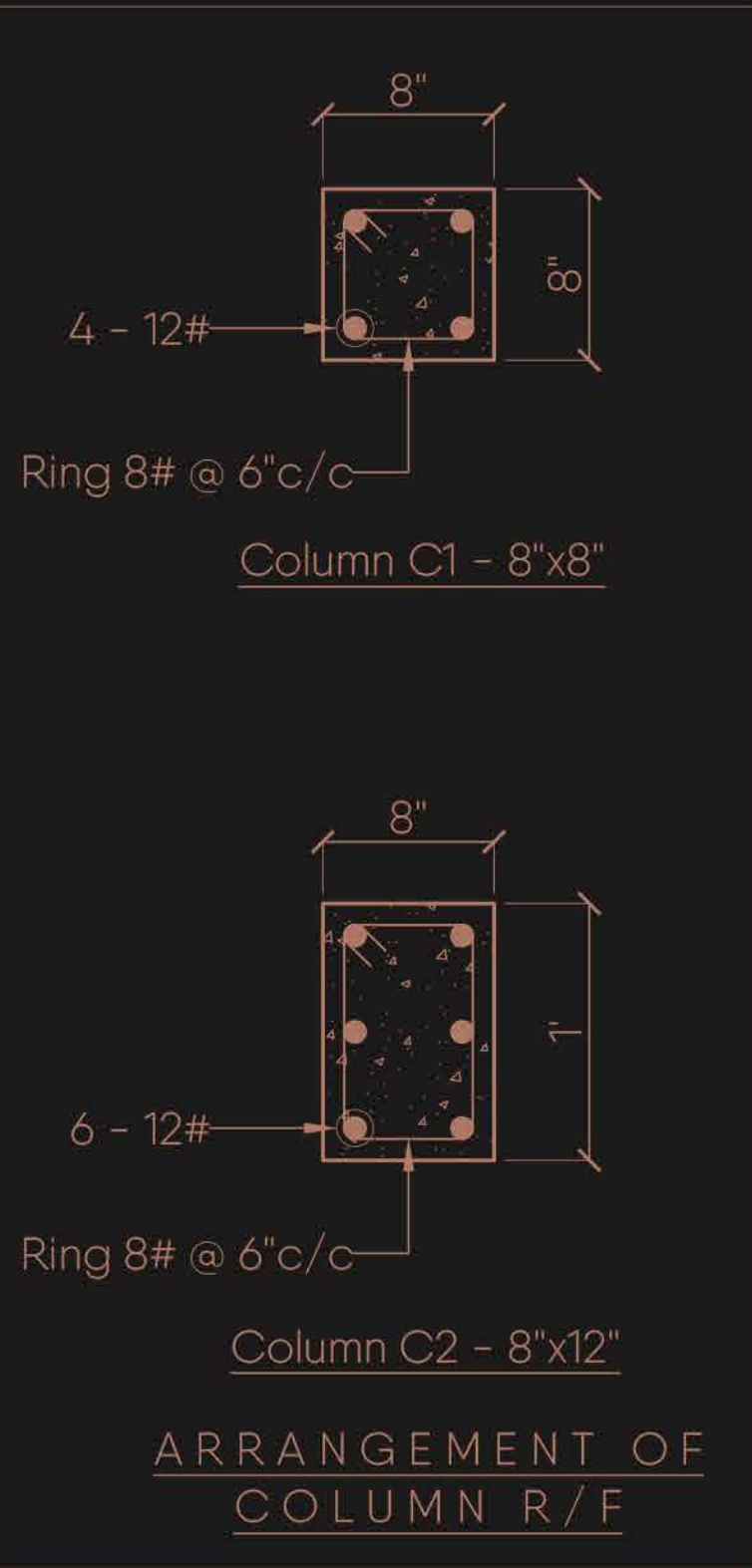
Area (m²): **80**
No. of Keys: **6**
No. of Bays: **12**



STANDARD Guestroom (King)

Area (m²): **40**
No. of Keys: **91**
No. of Bays: **91**





WORK EXPERIENCE

PROJECT	SANTOZA - TEMPLE
	22 Working Drawing SITE AREA (686 sq.ft)

SHEET TITLE	COLUMN AND FOOTING DETAILS
	TEMPLE - WORKING DRAWING

NORTH 	DWG NO.: WD-D-1
	REVISION NO: -
	SHEET : A4
	SCALE -

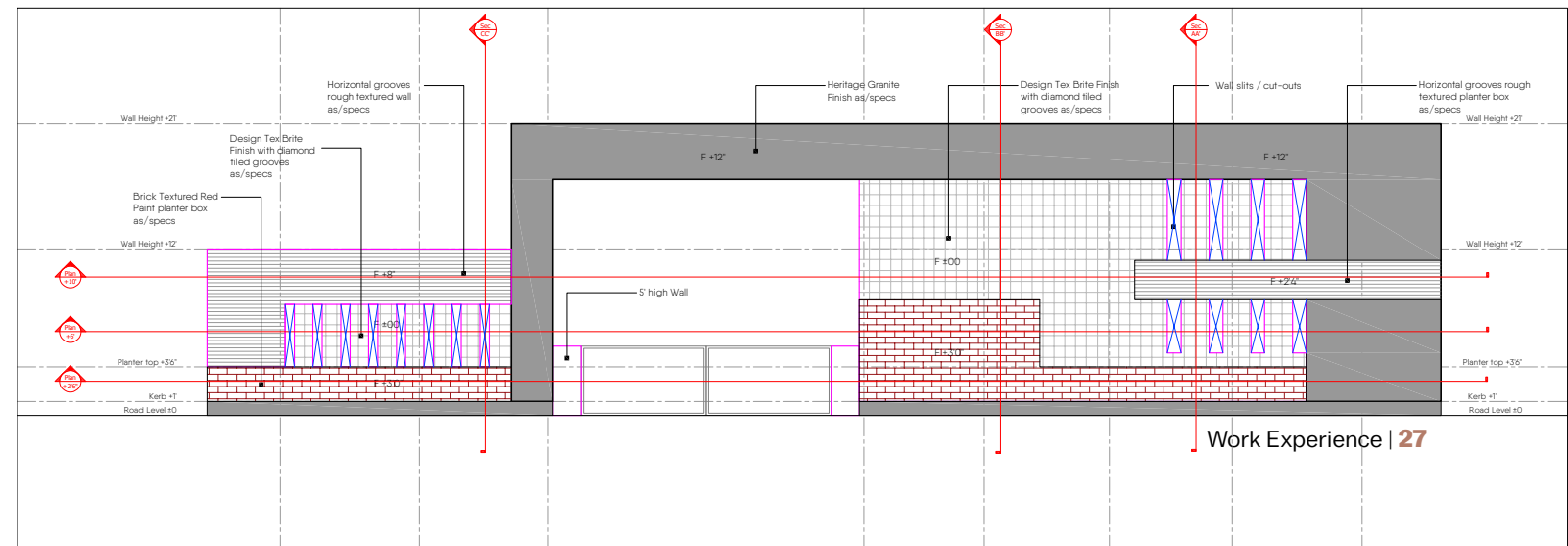
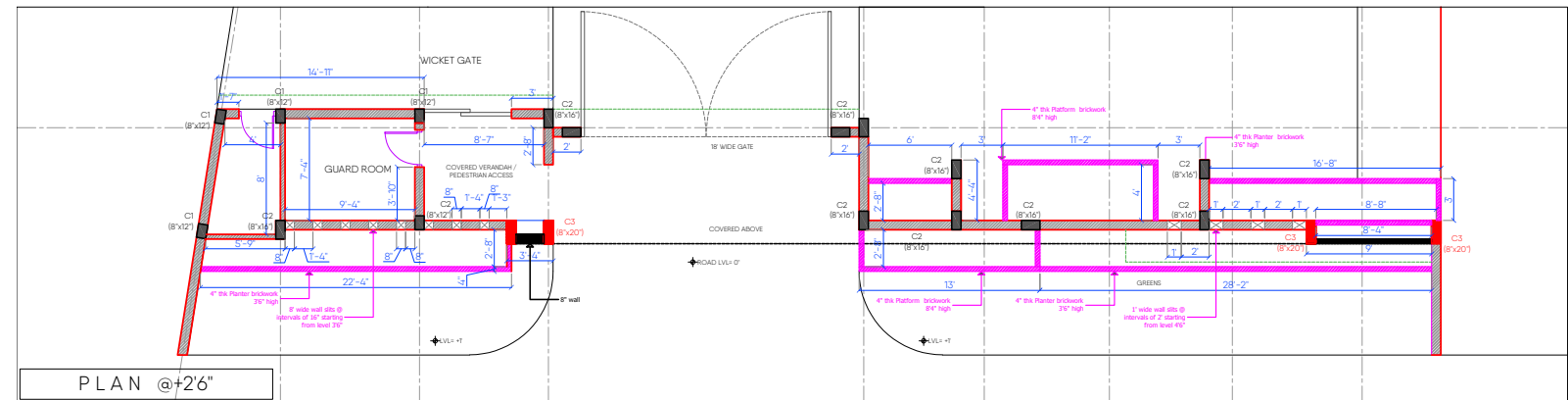
DATE	01-12-2020
DRAWN BY:	ANSHU PAL
CHECKED BY:	

ARCHITECT	VASTU CONSULTANTS
	COA Reg No: Work Experience 23
	NEETA MOHGAONKAR
	E-1/185, ARERA COLONY Bhopal. Tel.: 4700050



Creating Environments
Remodelling of a drawing room and dining area for a house on GoPillar

Clockwise from top Visualization of the space



Creating Entries

Responsibilities included designing the complete Entrance for a residential society, preparing drawings and visualizations for the official brochure



Designing Exterior Elevations // Clubhouse

Responsibilities included developing the exterior elevation of the clubhouse in the housing society- Fortune Acharya Enclave using different textures and materials; and developing realistic visualizations for their brochure



Bird's Eye View

Designed the site plan elements for the housing society Fortune Acharya Enclave, and developed the bird's eye view for the brochure



Visualization of the housing society Fortune Acharya Enclave, for brochure. Elevation design and visualizations by author.

Designing Exterior Elevations // Housing Units

Developed the exterior elevation of the housing units in a residential society; and developed realistic visualizations for their brochure

Clockwise from top Visualization of society, Unit Plan Renders for brochure



- 1 Entrance Solution (Desk with Mirror Wall)
- 2 Armchair
- 3 2-Seater Sofa
- 4 Pouf Ø 600
- 5 Coffee Table Ø 500 x Ø 400
- 6 TV Wall
- 7 French Bed 1500 x 2000
- 8 Side Table Ø 400
- 9 Wardrobe 600 x 500
- 10 Sink on countertop 900 x 550
- 11 Bidet
- 12 WC
- 13 Ledge for Shower Area 800 x 300 x 450
- 14 Shower glass enclosed 800 x 1000
- 15 Induction cooktop
- 16 Kitchen Sink
- 17 5-Seater Dining Table Ø 1050
- 18 Wall-hung Bookshelf
- Mw Microwave (integrated under countertop)
- FR Fridge (integrated)
- WM Washing Machine in a Laundry Cabinet



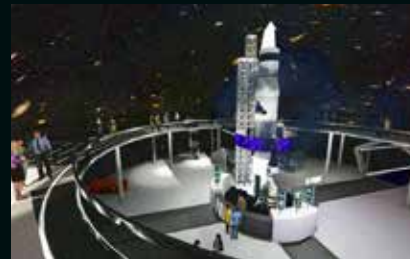
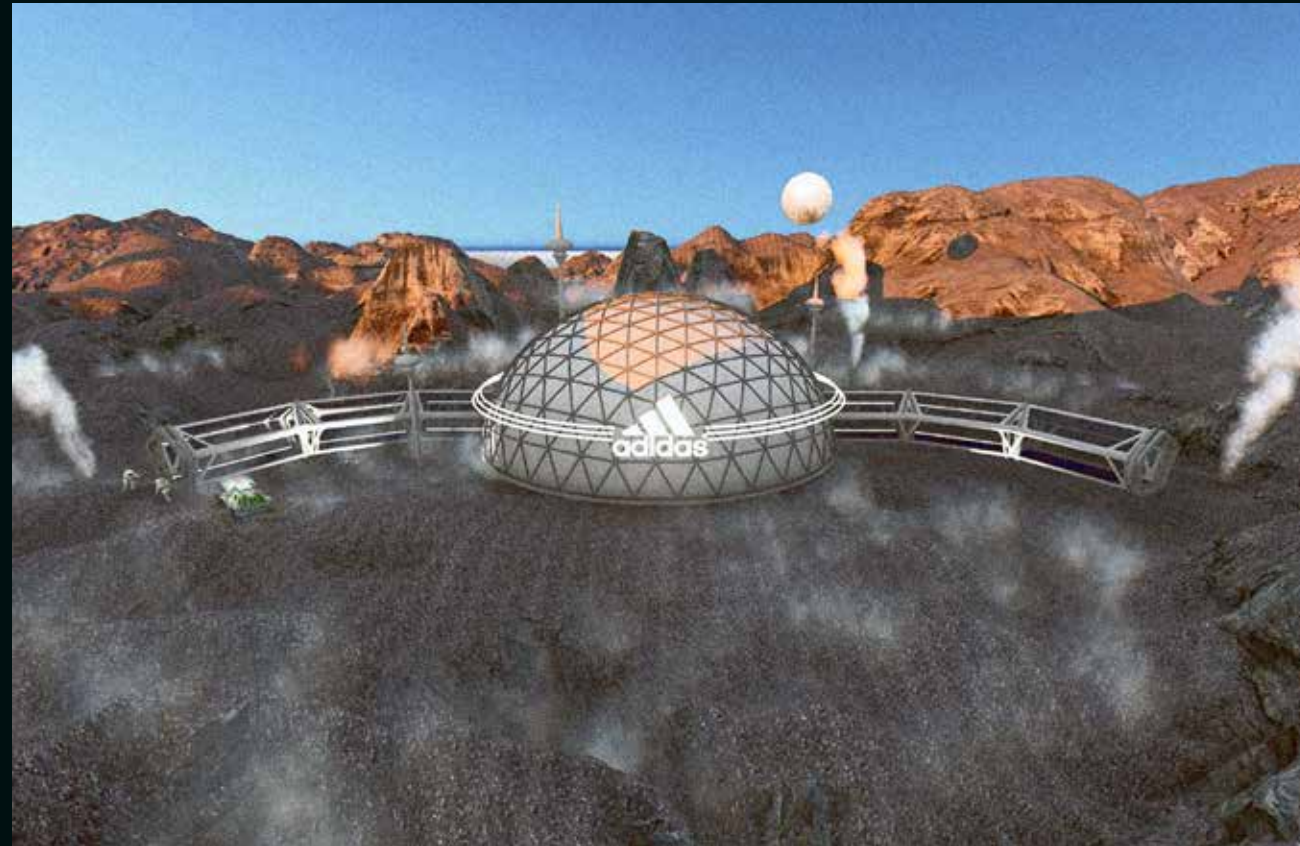
Detail Plan | Main Floor



Piccolo Gioiello on GoPillar

The competition brief was to design a living, kitchen and sleeping area for one-two person in a 6.4 x 4.0 m room for lease purpose. The living and kitchen are designed in an open layout to maximize the utility of space. Furthermore, a partition wall separates the bedroom, making it a cosy relaxation space.

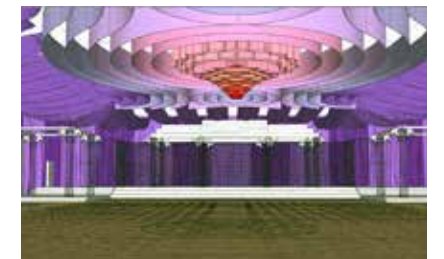
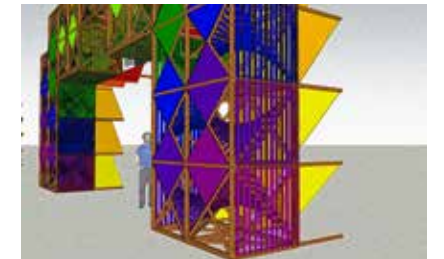
Clockwise from top Visualization of the space from the bedroom and kitchen (second), Detail Plan



Product Launch Pop-up

The concept revolved around the running shoe and the brand identity. This inspired conceptualization was approved at the pitch and later executed for the launch. Conceptualization, 3D modelling and visualization by author for AWD.

Clockwise from top Exterior visualization of the pop-up, Interior visualization



Visualizations executed as a part of experiential & spatial design projects for AWD.

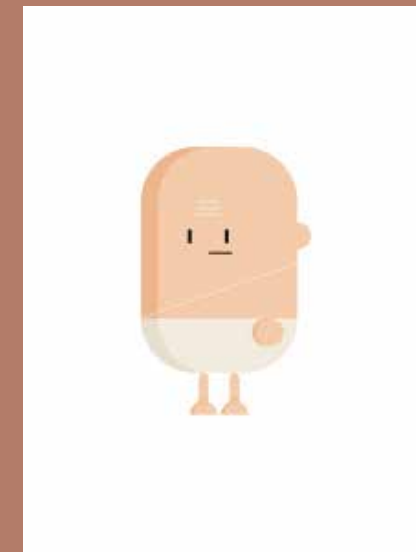
Clockwise from top Forest inspired information desk for a music festival, The secondary concert stage for a food festival, Stage design for a comedy show, Main entrance design for NH7 Weekender, Set design for a wedding reception, Maze installation for NH7 Weekender, Tree of Life Installation for NH7 Weekender



Clockwise from top Aurora (Oil on Canvas), Relieved of Inhibitions (Digital Art) **Facing Page:** Ande ka Funda (Vector Artwork for OnePlus)

EXPERIMENTS

Freelance and Self-Initiated Projects





Hand's a Muse Digital Art

Anshu Pal
anshupal3110@gmail.com